

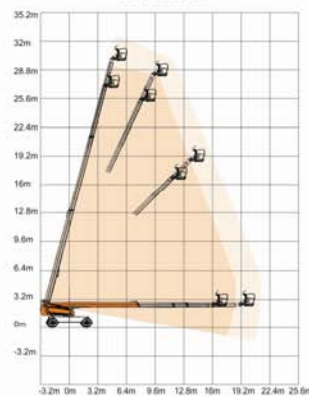
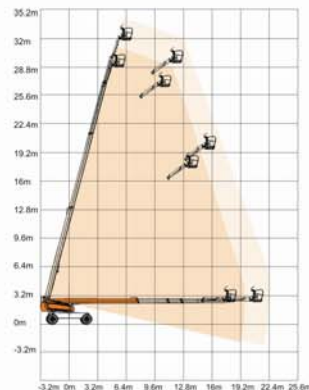


GTBZ-S

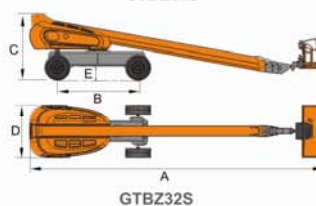
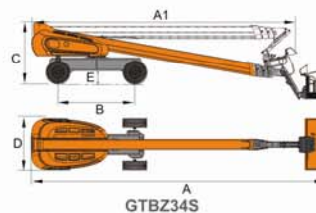
Self-Propelled Telescopic Boom Lifts

GTBZ34S / GTBZ32S

	GTBZ34S	GTBZ32S
S.W.L		
Unrestricted	230kg	340kg
Restricted	450kg	450kg
Max.occupants	2	2
Max. Working Height(Unrestricted)	34m	32m
Max. Working Height(Restricted)	31m	29m
Max. Platform Height(Unrestricted)	32m	30m
Max. Platform Height(Restricted)	29m	27m
Max. Horizontal Reach(Unrestricted)	22m	22m
Max. Horizontal Reach(Restricted)	19m	19m
Turntable tailswing(Axle Retracted)	1.95m	1.95m
Turntable tailswing(Axle Extended)	1.3m	1.3m
Under Ground Reach	3m	1.1m
Overall Length(Stowed)	14.53m	13.34m
Overall Length(Transport)	12.23m	/
Overall Width(Axle Retracted)	2.5m	2.5m
Overall Width(Axle Extended)	3.8m	3.8m
Overall Height	3.05m	3.05m
Platform Size	2.4X0.9m	2.4X0.9m
Ground Clearance	0.32m	0.32m
Wheel Base	3.8m	3.8m
Turning Radius		
Inside/Outside (Axle Retracted)	4.18/5.15m	4.18/5.15m
Inside/Outside (Axle extended)	2.37/3.78m	2.37/3.78m
Turret Rotation	360° continuous	360° continuous
Platform Rotation	+/-90°	+/-90°
Jib Movement	+70° /-60°	/
Engine		
Perkins 804-33T	62kw/2600rpm	62kw/2600rpm
Fuel	Fuel	Fuel
Travel Speed(Stowed)	5.1km/h	5.1km/h
Travel Speed(Working)	≤1.1km/h	≤1.1km/h
Gradeability	40%	40%
Maximum slope	5°	5°
Hydraulic tank	280L	280L
Fuel Tank	150L	150L
Tyre	445/65-22.5	445/65-22.5
Gross Weight	18250kg	18000kg



Restricted
Unrestricted



Standard equipment

- Can Bus Technology
- Proportional controls
- Safety electric pump
- Horn
- Hour meter
- Overload sensor with alarm
- Tilt sensor
- 360° continuous turntable rotation
- Self-leveling platform
- Onboard diagnostic system
- Hydraulic platform rotation
- Anti-restart engine protection
- The glow plugs for cold starting
- Extendable axles
- Oscillating axle

Options

- 4WD
- 4WS
- European III emission engine
- Deadman
- Hydraulic oil cooler
- Rough terrain foam-filled tyres
- Hydraulic generator
- Hydraulic welder
- Hydraulic compressor
- Hydraulic water pump
- AC power to platform
- Platform work lights



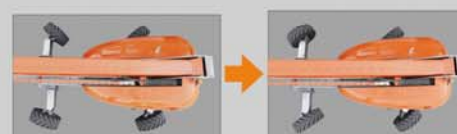
Flashing beacon

Ground control

Transport lock pin

Waterproof platform control

Platform work lights



4WS



Extendable axles