

GTBZ-S

Self-Propelled Telescopic Boom Lifts



GTBZ24S



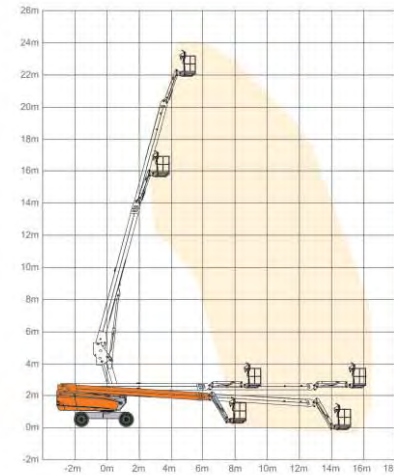
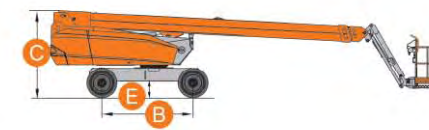
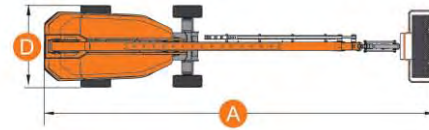
S.W.L	230kg
Max.Occupants	2



Max.Working Height	24.22m
Max.Platform Height	22.22m



Max.Horizontal Reach	16.36m
Turntable Tailswing	1.90m
A Overall Length	11.97m
D Overall Width	2.49m
Overall Width(Transport)	2.20m
C Overall Height	2.68m
Overall Height(Transport)	2.50m
Platform Size(Length/Width)	2.20m×0.80m
E Ground Clearance	0.28m
B Wheelbase	2.80m
Turning Radius(Inside/Outside)	3.52m/5.64m



Turret Rotation	360°continuous
Platform Rotation	±90°
Jib Movement	+70°/-60°



Engine	
Kubota V2403	34.1kW/2400rpm
Deutz D2011 L03 - Option	36.4kW/2800rpm
Fuel	Diesel



Travel Speed(Stowed)	6.1km/h
Travel Speed(Raised)	≤1.1km/h



Gradeability	40%
Max.Working Slope	5°



Hydraulic Tank	214L
Diesel Tank	155L



Tyres	355/55D625
-------	------------



Weight	11040kg
--------	---------



Standard Equipment

- Can Bus Technology
- Proportional Controls
- Safety Electric Pump
- Horn
- Hour Meter
- Overload Sensor With Alarm
- Tilt Sensor
- 360° Continuous Turntable Rotation
- Self-leveling Platform
- Onboard Diagnostic System
- Hydraulic Platform Rotation
- Anti-restart Engine Protection
- The Glow Plugs For Cold Starting
- Oscillating Axle
- 4WD
- European III Emission Engine
- Deadman
- Hydraulic Oil Cooler
- Rough Terrain Foam-filled Tyres

Options

- Hydraulic Generator
- Hydraulic Compressor
- Hydraulic Water Pump
- AC Power To Platform
- Hydraulic Welder
- Platform Work Lights
- European IV Emission Engine



Ground Control



Swing Out Engine Tray



Waterproof Platform Control



Foot Deadman