

# GTBZ-SI

## Self-Propelled Telescopic Boom Lifts



GTBZ20SI



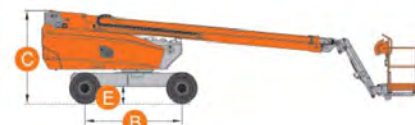
S.W.L	230kg
Max.Occupants	2



Max.Working Height	20.19m
Max.Platform Height	18.19m



Max.Horizontal Reach	13.50m
Turntable Tailswing	1.30m
A Overall Length(Stowed)	10.10m
D Overall Width	2.50m
Overall Width(Transport)	2.28m
C Overall Height	2.49m
Overall Height(Transport)	2.35m
Platform Size(Length/Width)	2.2m×0.8m
E Ground Clearance	0.24m
B Wheelbase	2.60m
Turning Radius(Inside/Outside)	3.37m/5.37m



Turret Rotation	360° continuous
Platform Rotation	±90°
Jib Movement	+70°/-60°



Engine	
Kubota V2403	34.1kW/2400rpm
Deutz D2011 L03 - Option	36.4kW/2800rpm
Fuel	Diesel



Travel Speed(Stowed)	6.1km/h
Travel Speed(Raised)	≤1.1km/h



Gradeability	40%
Max.Working Slope	5°



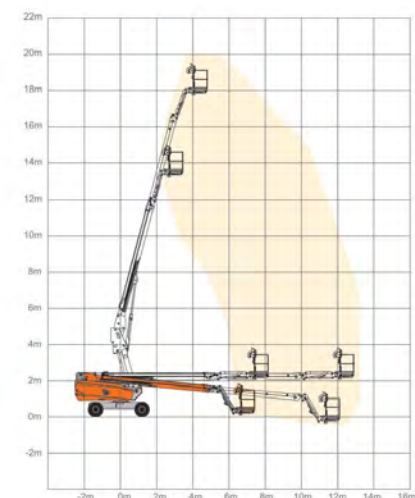
Hydraulic Tank	190L
Diesel Tank	110L



Tyres	315/55D20
-------	-----------



Weight	8800kg
--------	--------



### Standard Equipment

- Can Bus Technology
- Proportional Controls
- Safety Electric Pump
- Horn
- Hour Meter
- Tilt Sensor
- Rough Terrain Foam-filled Tyres
- Self-leveling Platform
- Onboard Diagnostic System
- Hydraulic Platform Rotation
- Anti-restart Engine Protection
- The Glow Plugs For Cold Starting
- Oscillating Axle
- European III Emission Engine
- 360° Continuous Turntable Rotation
- Deadman
- Hydraulic Oil Cooler
- 4WD

### Options

- Hydraulic Generator
- Hydraulic Compressor
- Hydraulic Water Pump
- AC Power To Platform
- Hydraulic Welder
- Platform Work Lights
- Overload Sensor With Alarm
- Non-marking Tyres



Foot Deadman



Transport Lock Pin



Waterproof Platform Control



Beacon