

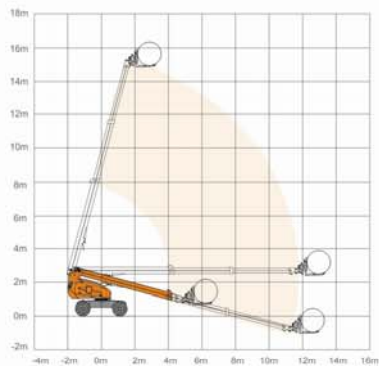
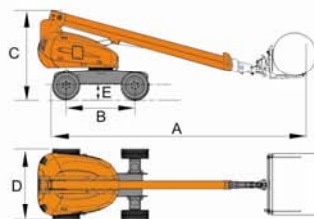


GTBZ 16SD

Self-Propelled Telescopic Duct Lifts

GTBZ16SD

	S. W. L	230kg
	Max. Lifting Height	16.5m
	Max. Horizontal Reach	11.6m
	Turntable tailswing	0.86m
	Under Ground Reach	0.5m
	Overall Length	8.61m
	Overall Width	2.28m
	Overall Height	2.55m
	Ground Clearance	0.36m
	Wheel Base	2.2m
	Turning Radius(Inside/Outside)	2.85/4.29m
	Turret Rotation	360° continuous
	Fork vertical Rotation	360° continuous
	Fork Horizontal Rotation	+/-90°
	Engine	
	Perkins 404D-22	38kw/3000rpm
	Kubota V2403	34kw/2400rpm
	Fuel	Fuel
	Travel speed (Stowed)	6.1km/h
	Travel speed (Working)	≤1.1km/h
	Gradeability	40%
	Maximum slope	5°
	Hudraulic Tank	170L
	Fuel Tank	75L
	Tyre	33"12-20
	Gross Weight	7800kg



Multifunction



Transport lock pin



Working lights



Remote controller



Lift crane hook

Standard equipment

- Can Bus Technology
- Proportional controls
- Safety electric pump
- Horn
- Hour meter
- Tilt sensor
- 360° continuous turntable rotation
- Self-leveling fork
- Anti-restart engine protection
- The glow plugs for cold starting
- 4WD
- Lift crane hook
- European III emission engine
- Hydraulic oil cooler
- Solid tyres

